



UNIKLINIK
KÖLN



COV
Im
Bestimmung und
Nutzung von
SARS-CoV-2 Immunität
Bestimmung von
SARS-CoV-2 Immunität
Bestimmung von
SARS-CoV-2 Immunität

1ère JOURNÉE SCIENTIFIQUE NATIONALE SUR LE COVID LONG – 19 NOVEMBRE 2021

Clara Lehmann Infectious Diseases, University Hospital of Cologne, Germany



Case Definition

A clinical case definition of post COVID-19 condition by a Delphi consensus

6 October 2021



Ongoing symptomatic COVID-19

- Signs and symptoms of COVID-19 from 4 weeks up to 12 weeks

Post-COVID-19 syndrome

- New signs and symptoms that develop during or after an infection consistent with COVID-19, continue for more than 12 weeks and are not explained by an alternative diagnosis.
- No clear biochemical or radiological features exist to aid diagnosis, and there are potentially several phenotypes with different presentations, prognosis, and outcomes.



Post COVID Syndrome – Different organ systems affected

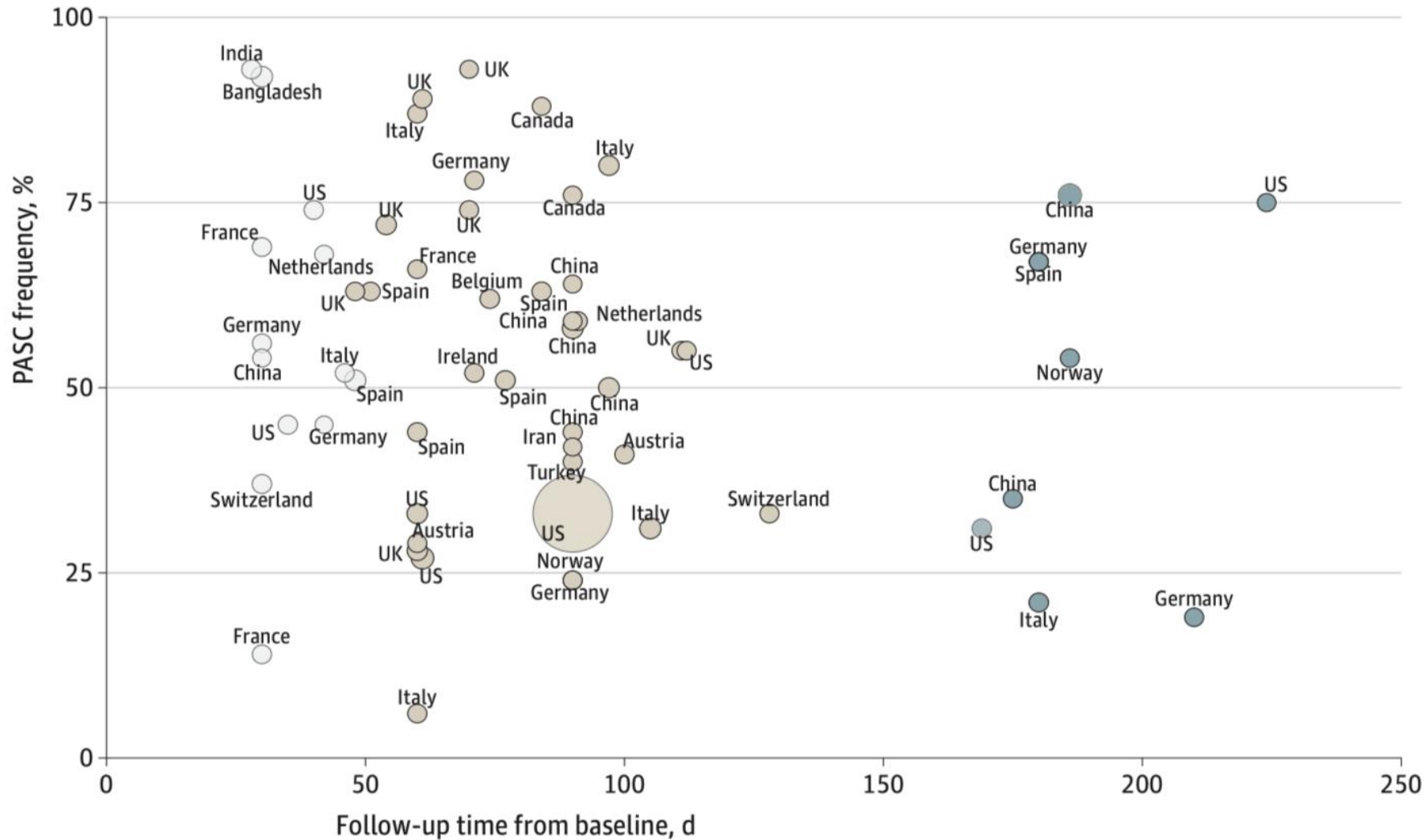




Prevalence Post COVID Symptoms are not comparable between studies



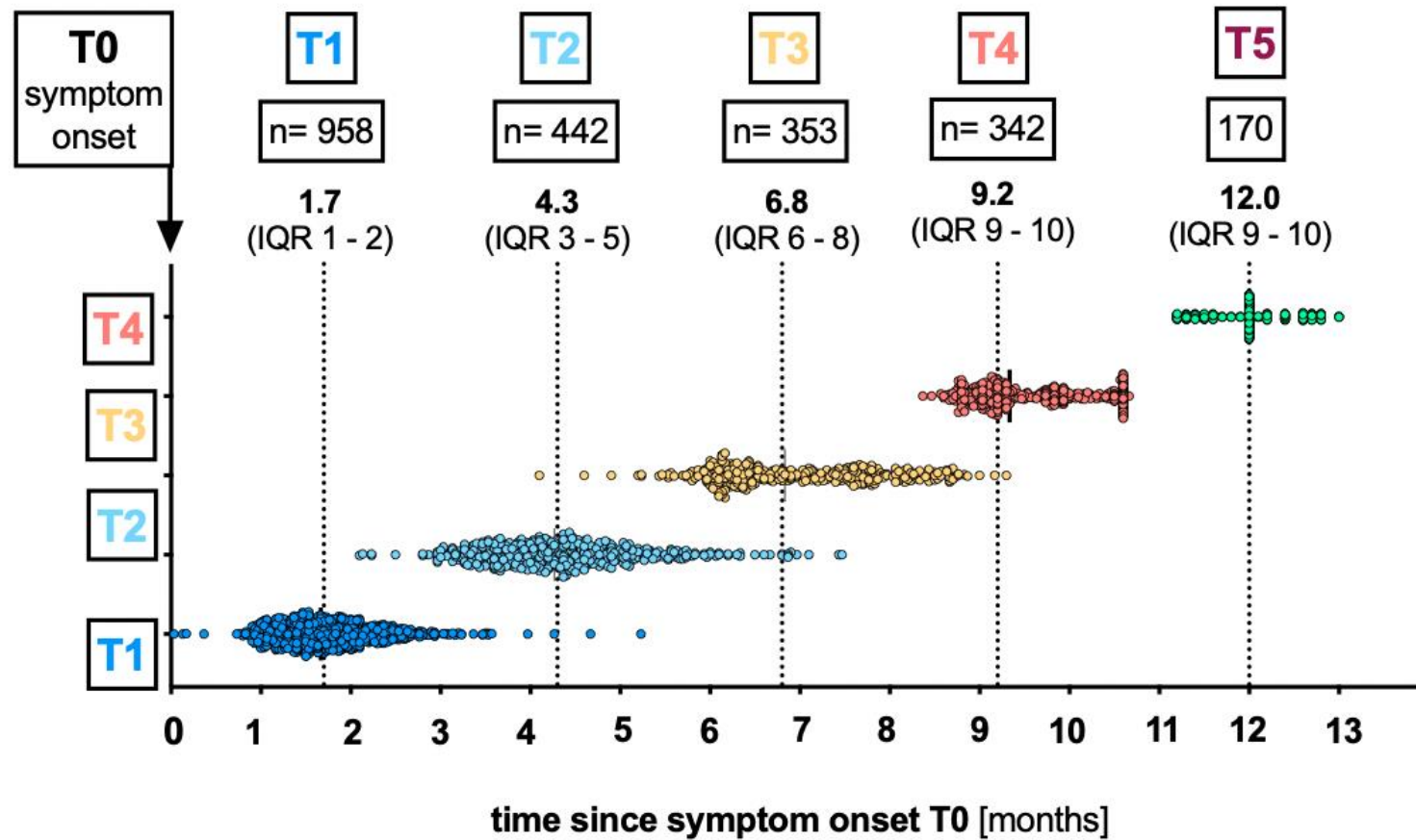
Studies Included Studying Postacute Sequelae of COVID-19 (PASC)



Prevalence of PCS 10-30%



Study population



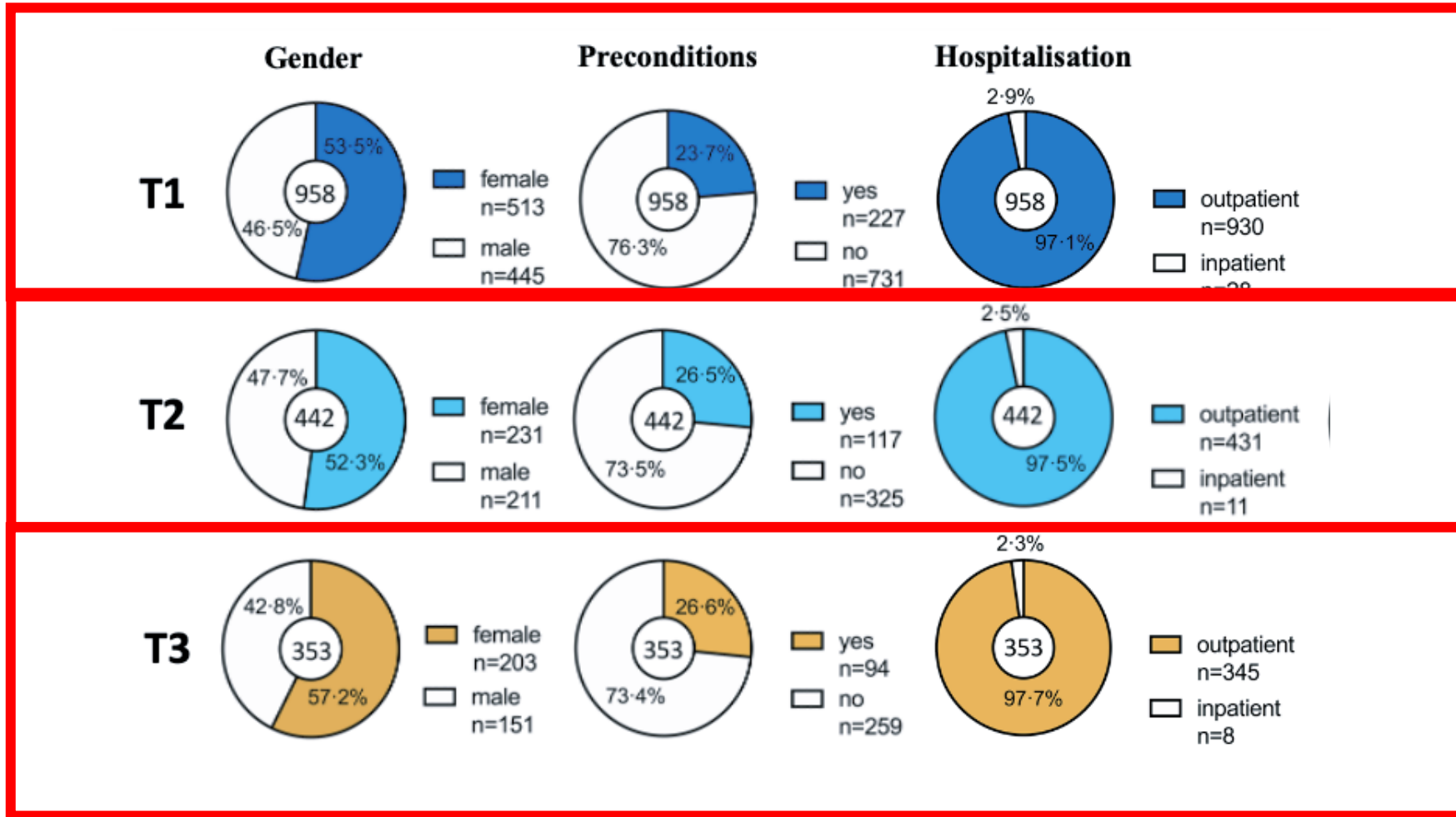


Patient characteristics of SARS-CoV-2 infected patients

	Male (n = 445)	Female (n = 513)	Total (n = 958)
Median age (IQR)	46 (32–55)	43 (30–53)	43 (31–54)
Hospitalisation	16 (3•6%)	12 (2•3%)	28 (2•9%)
Intensive care unit (ICU)	4 (0•9%)	3 (0•6%)	7 (0•7%)
General ward	12 (2•7%)	9 (1•8%)	21 (2•2%)
Preconditions	105 (23•6%)	122 (23•7%)	227 (23•7%)
Hypertension	46 (10•3%)	31 (6•0%)	77 (8•0%)
Chronic lung disease	11 (2•5%)	15 (2•9%)	26 (2•7%)
Malignancies	8 (1•8%)	15 (2•9%)	23 (2•4%)
Autoimmune disease	4 (0•9%)	13 (2•5%)	17 (1•8%)
Diabetes	7 (1•6%)	9 (1•8%)	16 (1•7%)



Study population





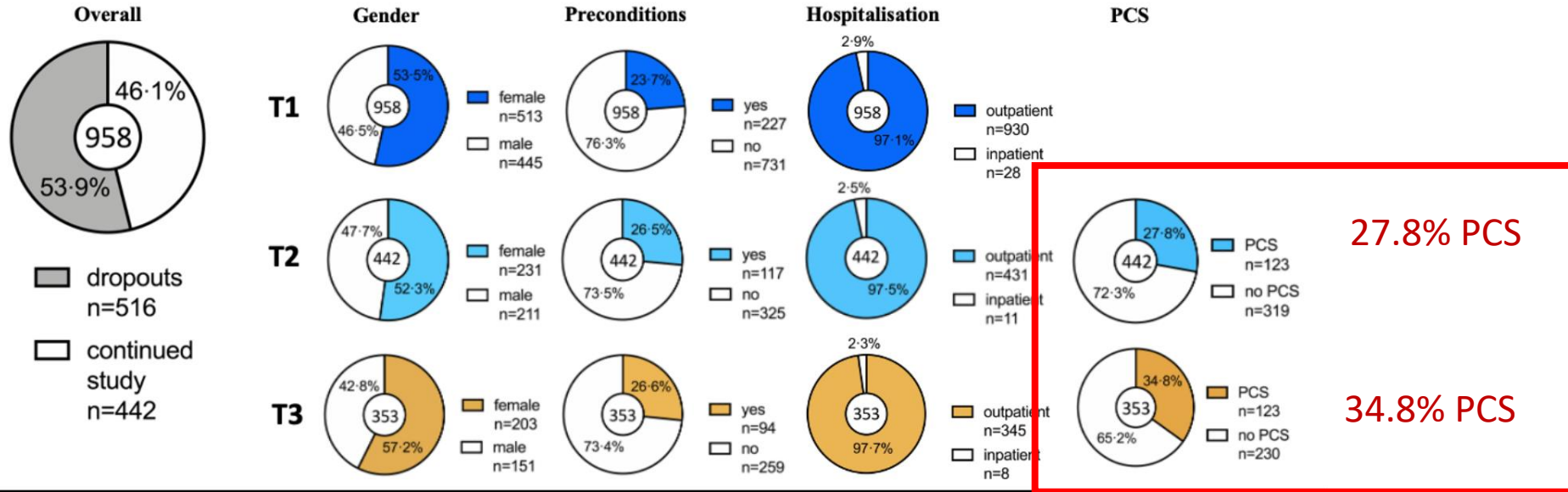
Post COVID-Syndrome (PCS) Symptoms after 7 Months

		Male (n=151)	Female (n=202)	Total (n=353)	
IgG Level	(median 6.8 months after initial symptoms)	No Symptoms	84 (55.6 %)	82 (40.6 %)	166 (47.0 %)
		Fever	0	2 (1.0 %)	2 (0.6 %)
		Cough	4 (2.6 %)	11 (5.4 %)	15 (4.2 %)
		Sore Throat	4 (2.6 %)	6 (3.0 %)	10 (2.8 %)
		Rhinitis	0	0	0
		Muscle and/or body aches	4 (2.6 %)	7 (3.5 %)	11 (3.1 %)
		Headache	1 (0.7 %)	12 (5.9 %)	12 (3.4 %)
		Diarrhea	1 (0.7 %)	3 (1.5 %)	4 (1.1 %)
		Ageusia	11 (7.3 %)	28 (13.9 %)	39 (11.0 %)
		Anosmia	20 (13.2 %)	32 (15.8 %)	52 (14.7 %)
		Alopecia	0	0 (1.5 %)	0 (2.5 %)
		Shortness of breath	11 (7.3 %)	37 (18.3 %)	48 (13.6 %)
		Fatigue	13 (8.6 %)	37 (18.3 %)	50 (14.2 %)
1st Visit (S/CO-Ratio, median)	4 (2-7)	3 (1-5)	3 (2-6)		
2nd Visit (S/CO-Ratio, median)	3 (2-5)	2 (1-4)	3 (1-5)		
3rd Visit (S/CO-Ratio, median)	2 (2-4)	2 (1-4)	2 (1-4)		

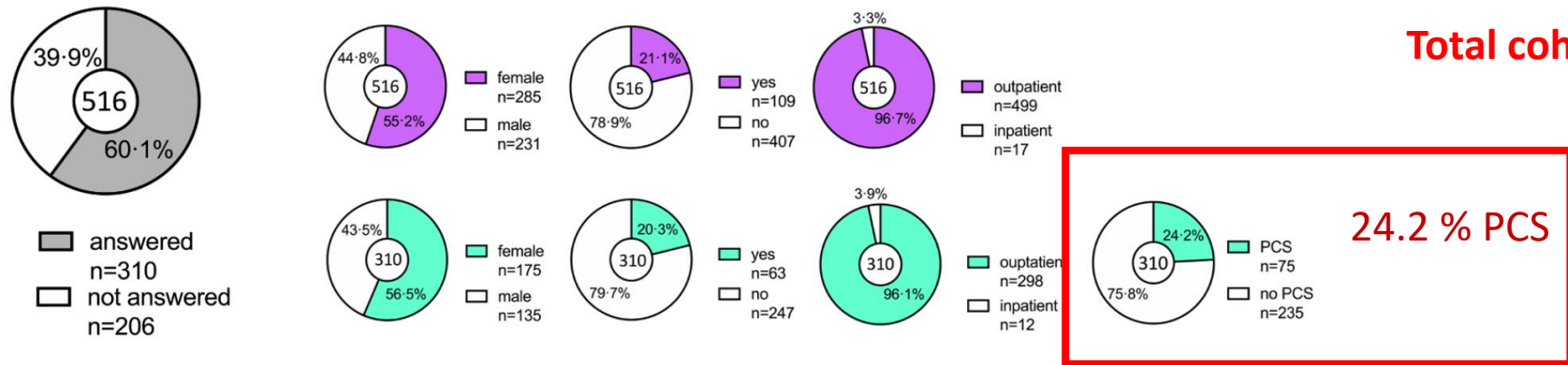


PCS-rate about 12.8%

A Study Population & Visits (T1, T2 and T3)



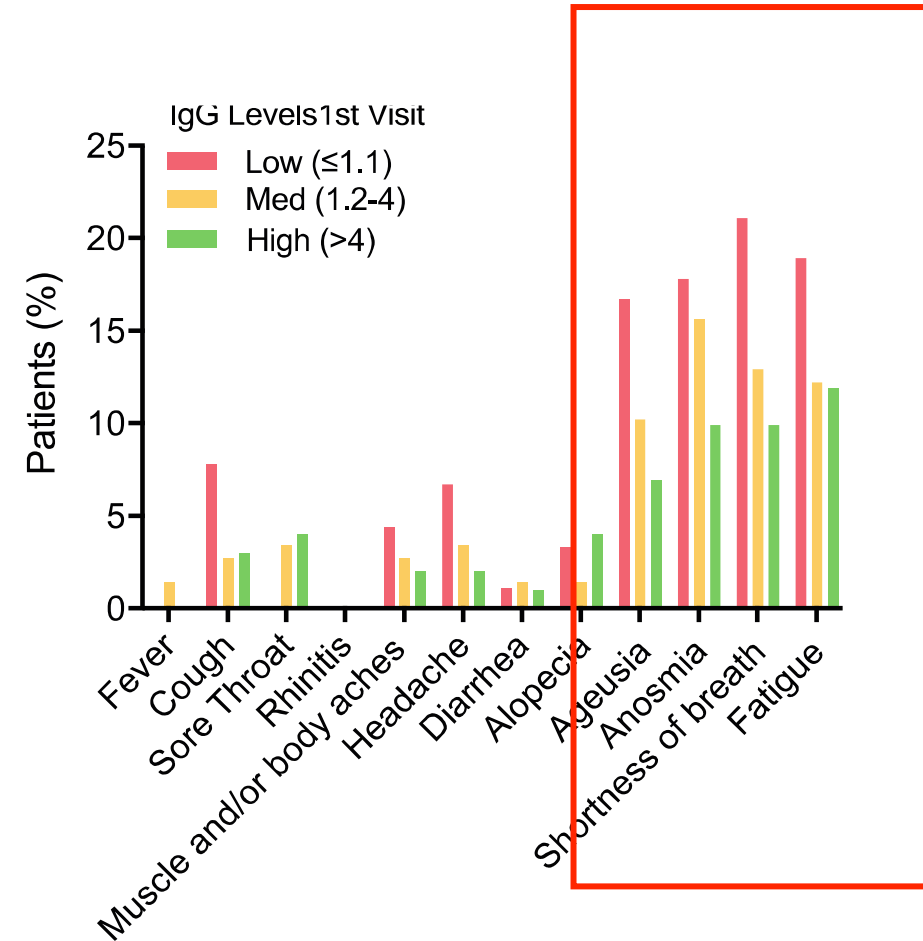
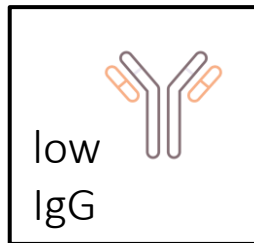
B Phone calls of dropouts



Total cohort: 123/958=12.8%



Risk factors/predictors for PCS





Summary

Clear Case Definition

WHO October 2021

Prevalence are not comparable between studies

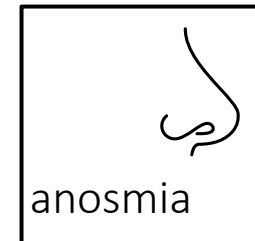
15-45%

Study Augustin et al.

- 1) Shortness of breath
- 2) Fatigue
- 3) Smell changes
- 4) Taste changes

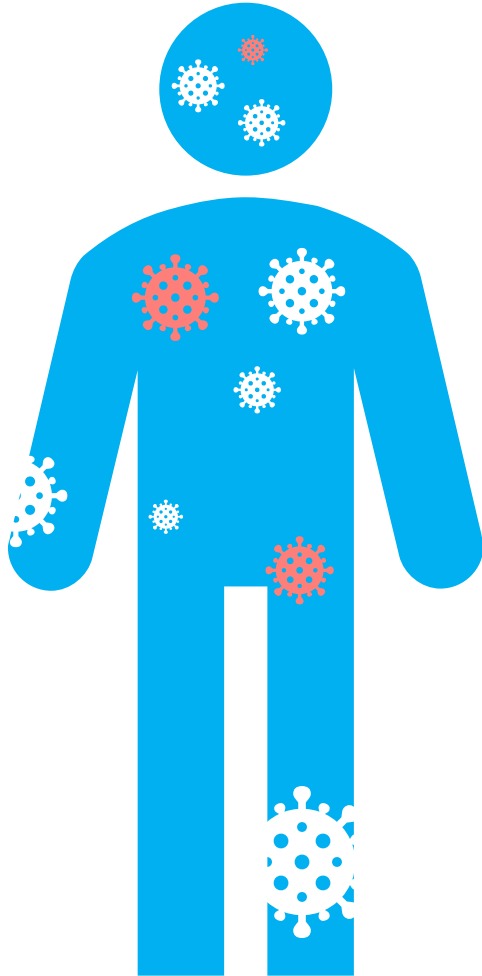
7 months after disease onset
Up to 15% PCS

Risk factors





Merci pour votre attention



AG Lehmann

Max Augustin
Ute Sandaradura da Silva
Vanessa Priesner
Carola Horn
Jasper Mundt
Jonas Rieping
Maria Roventa
Toqeer Riaz

Institut für Virologie, Uniklinik Köln

Florian Klein
Susanne Salomon
Veronica Di Cristanziano
Philipp Schommers
Kanika Vanshylla
Felix Dewald
Lutz Gieselmann

Klinik 1 für Innere Medizin, Uniklinik Köln

Michael Hallek

Infektionsambulanz

Gerd Fätkenheuer
Isabelle Suarez
Alina Kretschmer
Philipp Schommers
Inger Vermeer
Natalia Pittner
José Llano González
Karen Finkenberg
Jody Mpaka

Clara.lehmann@uk-koeln.de